

# FLUOSTAR

EBM Corp., 4-6-15 Omoriminami, Ohta-ku, Tokyo, 143-0013, Japan  
E-mail: fluostar@ebm.vc, URL: www.ebm.vc, TEL: +81-3-5737-2884, FAX: +81-50-3488-3214

## Technical instruction

### 1) Pre-mixing

FLUOSTAR fluorescent particles feature excellent water dispersibility, but pre-mixing of particles prior to seeding is preferred like most dry particles, such as hollow glass spheres. There is no need to put a chemical solution to help particles to be dispersed, which may adversely impair an emission efficiency of fluorescence. A simple hand-shaking will do using a small bottle (Fig.1).



Fig.1 Pre-mixing

### 2) Long-pass filter

A long-pass filter is required to enjoy an advantage of FLUOSTAR particles (Fig.2-3).

The filter is available from major optics suppliers at an economical price. The filter should have a sharp cut-off wavelength at around 550 nm since a modern green PIV laser, such as Nd:YAG, has a 535-nm wavelength and Rhodamine B encapsulated in FLUOSTAR particles has a 580-nm emission wavelength (see brochure). A filter attachment may help install the filter either before a lens or between a lens and an imaging sensor, but not mandatory, where you can simply place the filter anywhere in an optical pass.

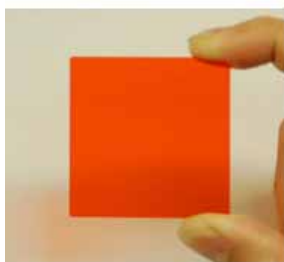


Fig.2 Optical filter and attachment

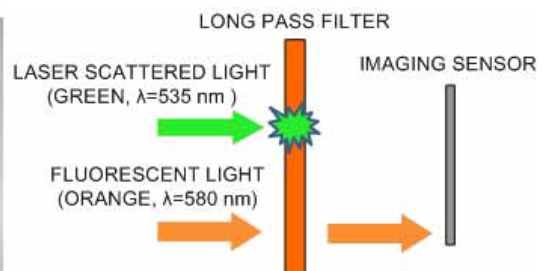
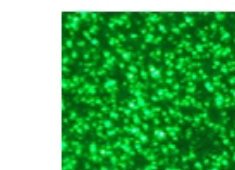
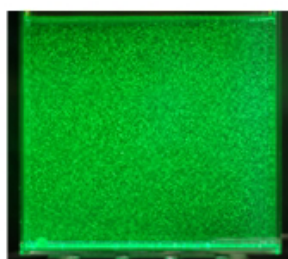
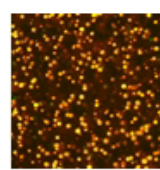
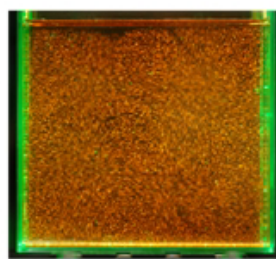


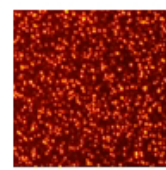
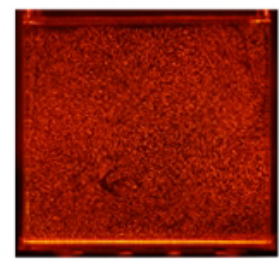
Fig.3 Schema of a long-pass filter



HOLLOW GLASS SPHERES



FLUOSTAR  
(WITHOUT FILTER)



FLUOSTAR  
(WITH FILTER)